

Most portfolio tools measure the past. They completely miss the structure.



Backward-Looking By Design

Shows what a portfolio did yesterday. Provides zero insight on positioning for future uncertainty.

The Illusion of Diversification

Often highly concentrated in the exact same macro exposures and crowded growth equities.

Blind to Fragility

Lacks visibility into underlying layers. Investors don't see vulnerability until volatility hits.

Guessing vs. Understanding

Leaves investors guessing on market moves instead of understanding structural resilience to shifts.

The Hidden Truth: Markets Are Not Stable Systems



Structural Instability

Modern markets are shaped by liquidity cycles, macro shocks, technological disruption, and geopolitical shifts.

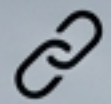
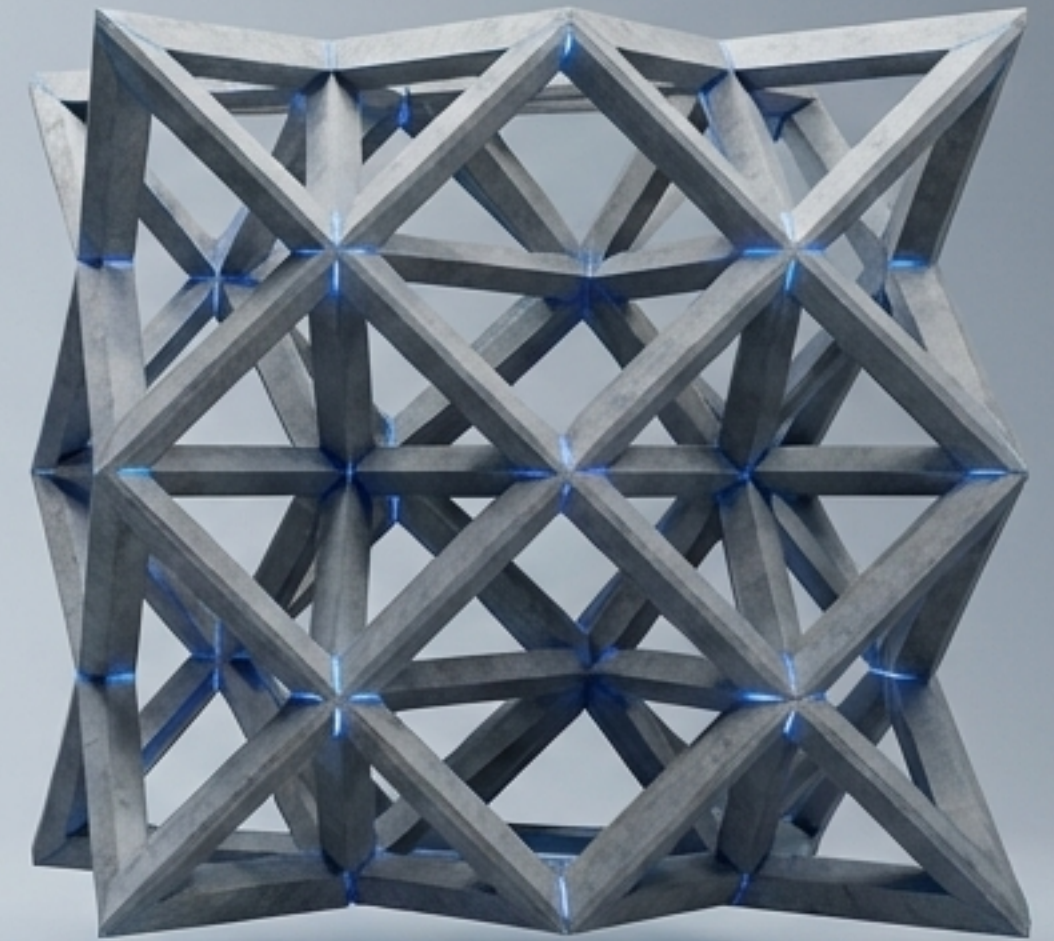
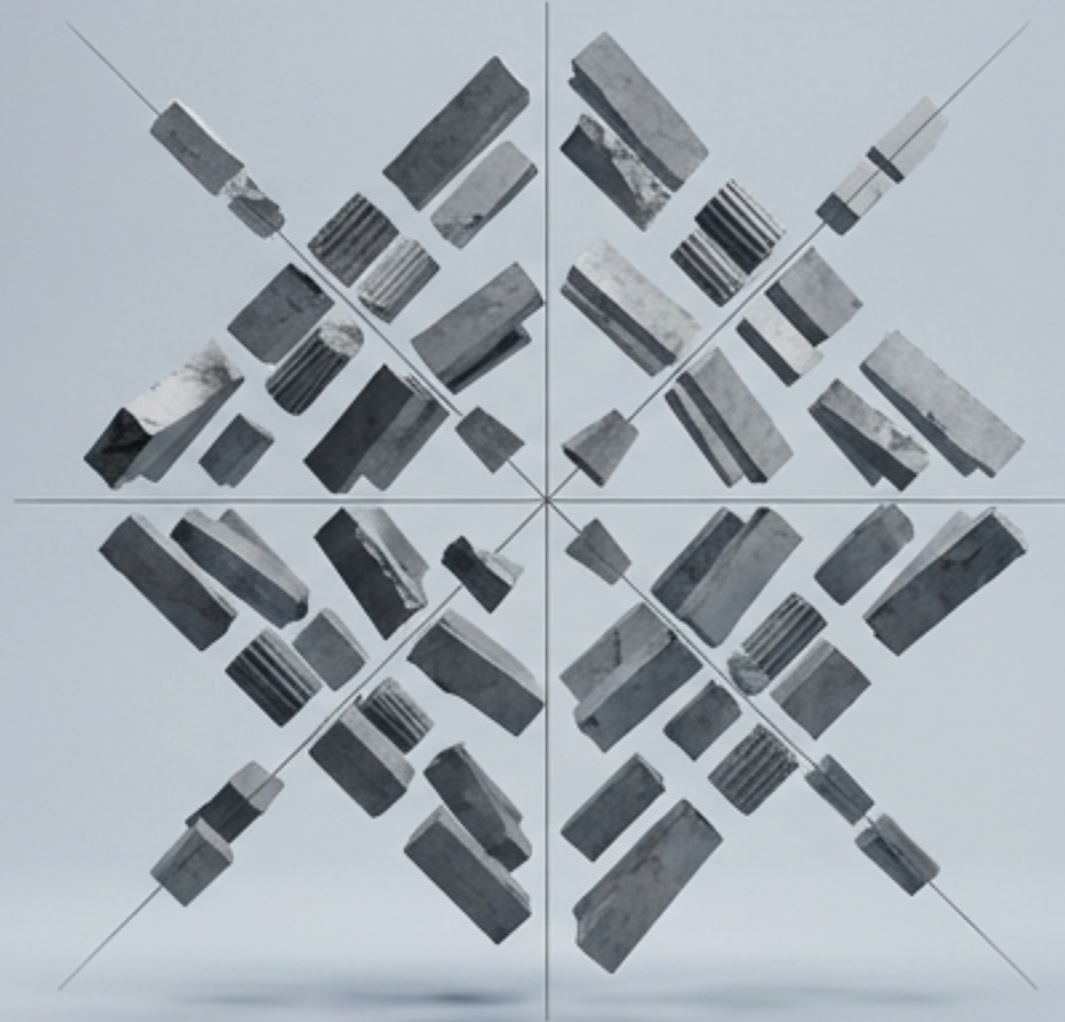
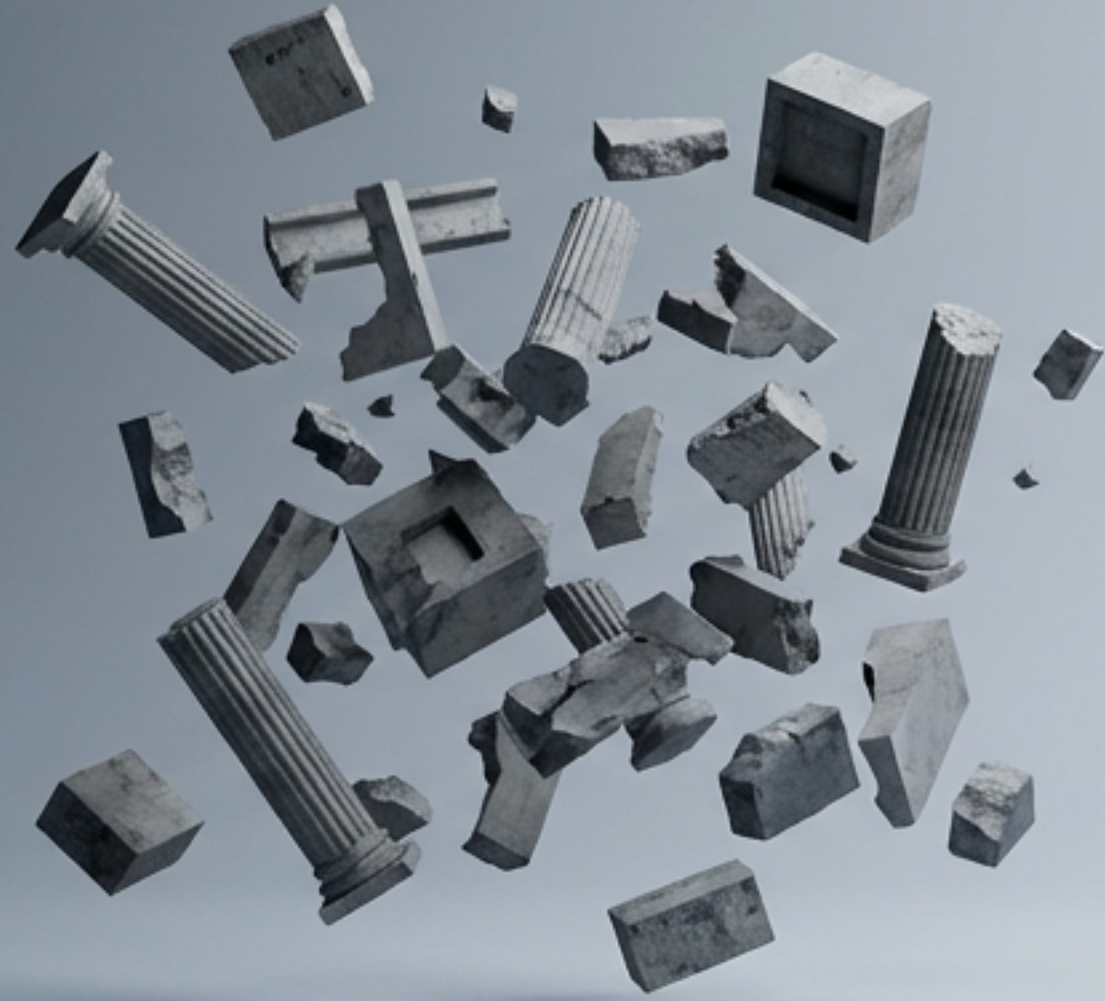
The Failure of Prediction

Forecasting complex systems often creates false confidence instead of resilience.

A New Approach

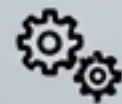
Investors must understand how their portfolio behaves structurally under stress rather than trying to predict outcomes.

How ACF Transforms a Portfolio Into Structural Architecture



Connect

Users link or import their holdings.



Classify

Each position is categorized by structural role.



Reveal

ACF calculates a Convexity Integrity Score and exposes fragility and concentration.



Support

The system continuously monitors positions and signals structural deterioration.

FRAGILITY WARNING: High Concentration Risk Detected



The Shock of Discovery

Within seconds of connecting a portfolio, hidden concentration risk becomes visible.

The Reality Check

The Convexity Integrity Score exposes structural fragility that traditional dashboards never reveal.

The Shift

Investors move from passively tracking positions to actively managing structural resilience.

The Opportunity: Portfolio Intelligence for a Macro-Driven World

The Target Audience

Self-directed and macro-aware investors who want deeper structural insight into how their portfolios behave in global uncertainty.

The Failure of Traditional Tools

Most dashboards measure past performance but offer no visibility into structural exposure or fragility.

The Emerging Category

Portfolio Intelligence: a new class of tools designed to reveal structural risk and asymmetric opportunity.

